

2023
Annual
Report

Success Starts Here!



About Us

Crystal Stairs, Inc. Head Start/Early Head Start (CSI HS/EHS) is a federally funded program that supports children's growth from birth to age 5 through core services that promote early learning and development, health, and family well-being. Our staff actively engages parents, recognizing family participation throughout the program as key to success.



A Letter From Our CEO

2023 was a remarkable year of community building for our Head Start families and providers. Our staff has been busy engaging families in enrollment, healthcare education, and advocacy work. I am consistently proud of the staff who ensure our seventeen Head Start sites throughout South Los Angeles in Compton, Inglewood, and Long Beach continue to provide a safe, welcoming, inspiring, and joyful space for our students, staff, and families where everyone is learning and growing together.

Fueled by our most recent community assessment, the Crystal Stairs Head Start team has been thoughtfully growing programs to meet the ever-changing needs of our families. Expanding our Man Cave program – a safe place where men in our Head Start community can share their challenges and victories of fatherhood and lean on each other to grow their village of support – is one shining example. We hosted our first Dance with Dads event, creating memories that father figures and their children will cherish forever. I enjoyed seeing the dads engaging with their children. It reminded me how impactful our programs are. They are creating a support system to carry these families and their children through their lives.

When we empower families and nurture their strengths, the children in our care benefit. I am excited about what is next for our Head Start Community!

Jackie B. Majors
CEO, Crystal Stairs Inc.



1 Our Mission

Improving the lives of families through child care services, research, and advocacy.

2 Our Vision

We envision the improvement of children's lives – and their families – through quality birth-to-5 early childhood education services that prepare them to be successful in school.

3 Our Services

CSI HS/EHS provides services to 1,422 children up to age 5.

4 Center-based Child Care

We serve 985 children from birth to age five in 16 different sites in 5 different cities in 29 zip codes.

5 Child Care Partnerships

Through a partnership with 37 Licensed Family Child Care Home Providers in 29 zip codes, we serve 437 children up to age 5.



Family Services

Family services are a vital part of the HS/EHS program. In partnership with Crystal Stairs' extensive menu of services, families have access to resources and referrals in the community including employment, resource and health fairs, parent conferences and training workshops. Each child's family is assigned to a family services associate who assists in facilitating services related to health, social services, mental health, parent involvement, nutrition and disabilities.

To gauge the effectiveness of our family services, CSI Head Start conducted a Family Outcomes Survey designed to measure how parents felt their families benefited from the program. The survey measures our impact in each of the seven outcome areas designed to align with the Head Start Parent, Family, and Community Engagement (PFCE) Framework.

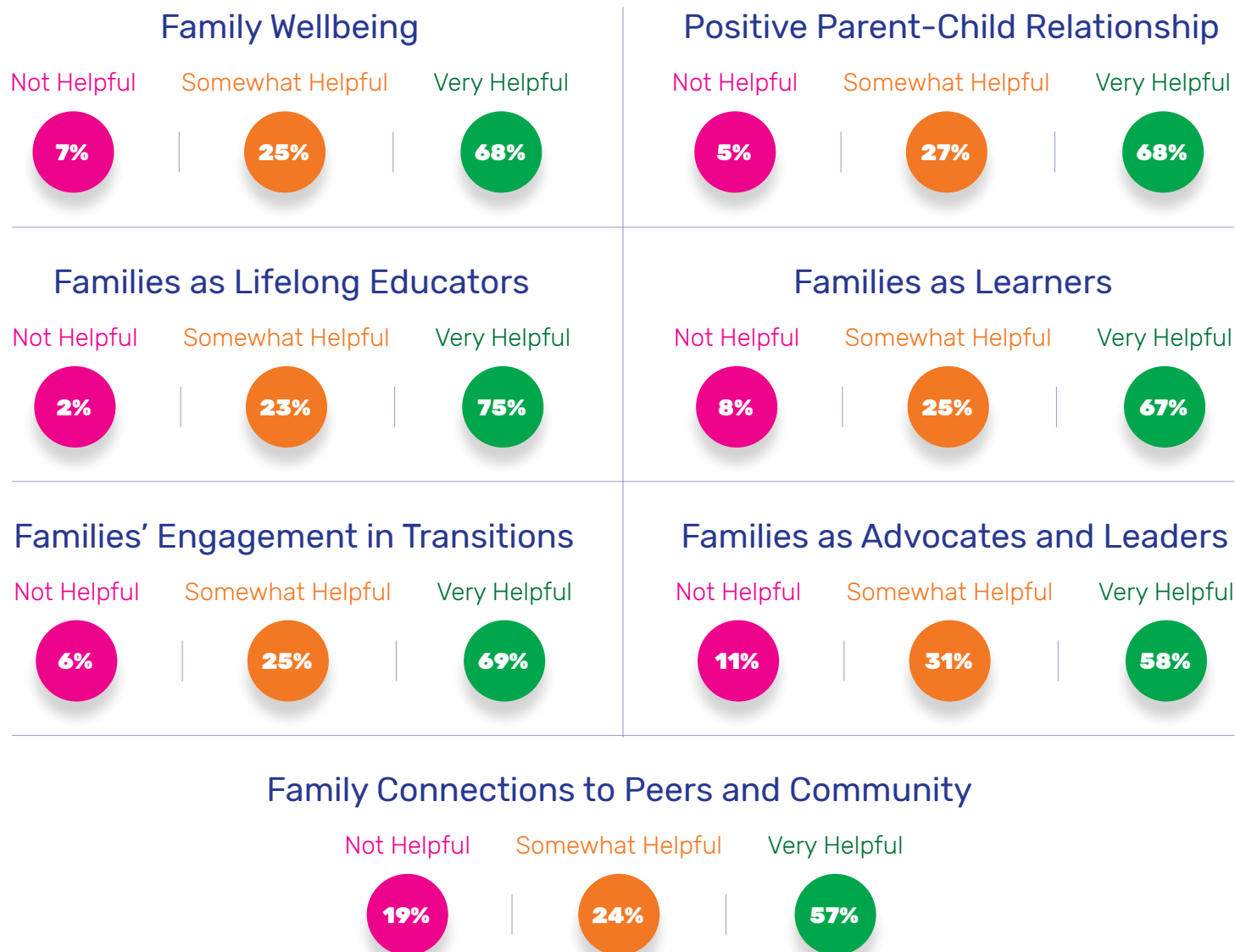


Parent Testimonial:

"My kid is at Head Start since 2022. I'm happy that my son Sebastian is at HS program because not only does this program help my kid it also helps me as a parent. Honestly, HS improved my parenting. I love the Parenting Support Group: Abriendo Puertas. This group first helped me to be confident of myself as a parent and also shows me how to be a better parent and a better person for my kids. Now every experience I had at Abriendo Puertas I also share it with my wife. We now become stronger parents."

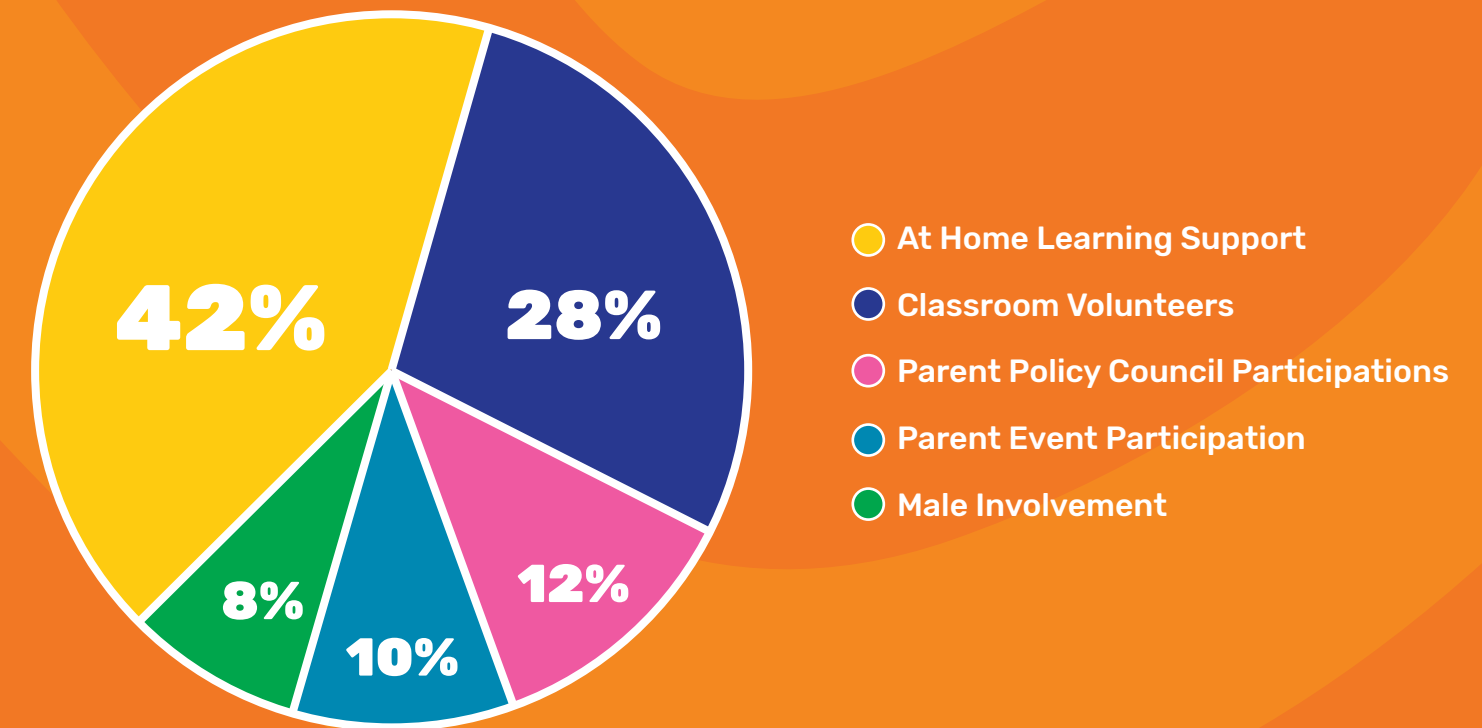
– Jeffrey, Head Start Parent

Information from families assessing these categories after participating in the Head Start program.



Parental Involvement

Parental involvement has always been a cornerstone for Head Start. CSI Head Start provides opportunities for parents/legal guardians to participate and support their role as the primary educators, caregivers, and nurturers of their children, as well as enhance their own personal development and decision-making skills.

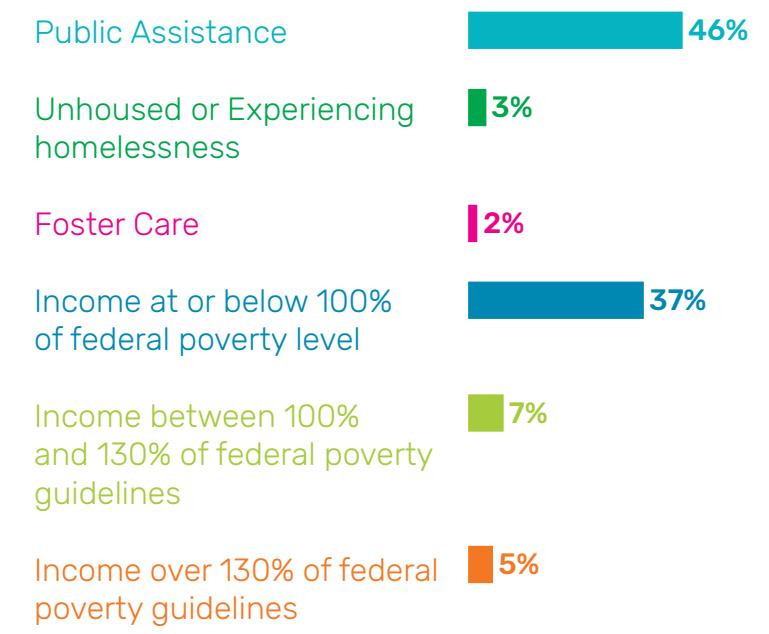


Enrollment & Eligibility

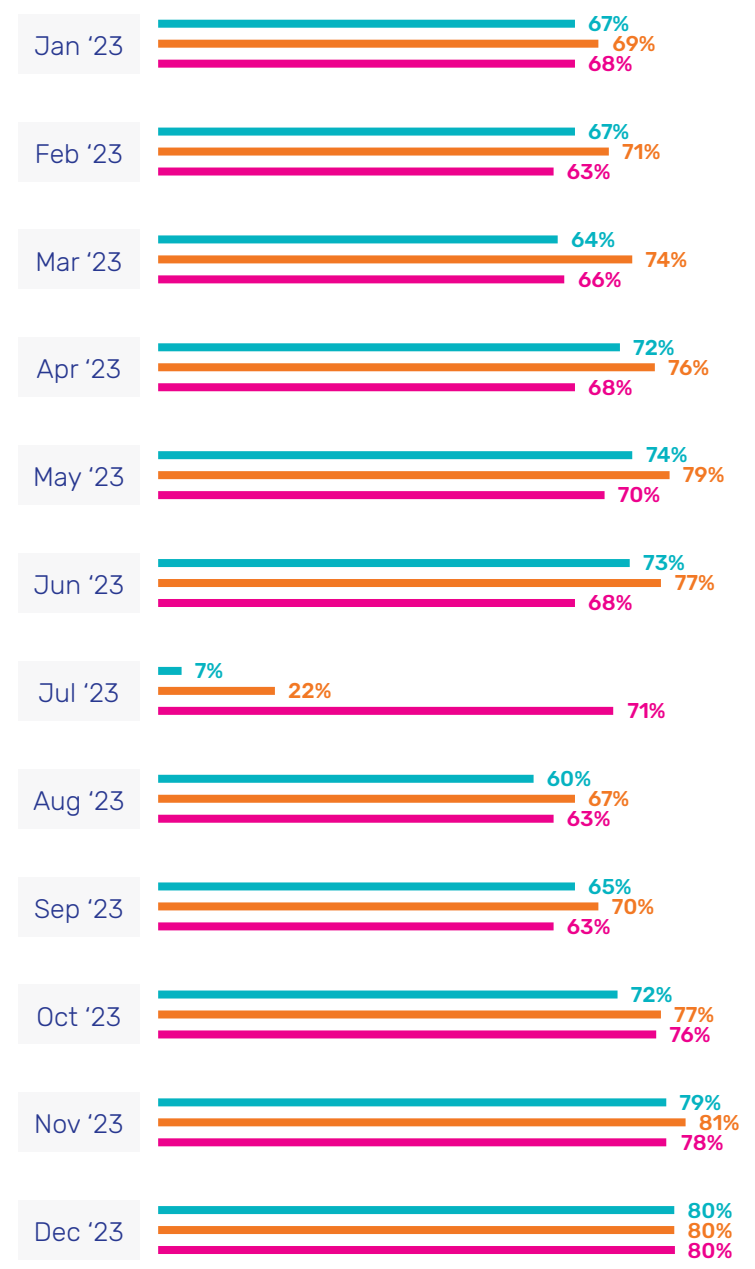
Accumulatively we serviced 1,302 children this program year. All families met the Head Start Eligibility requirement by income or qualifying family circumstance, including foster care, a disability, or a parent currently incarcerated.



Eligibility



Grant Enrollment 2023

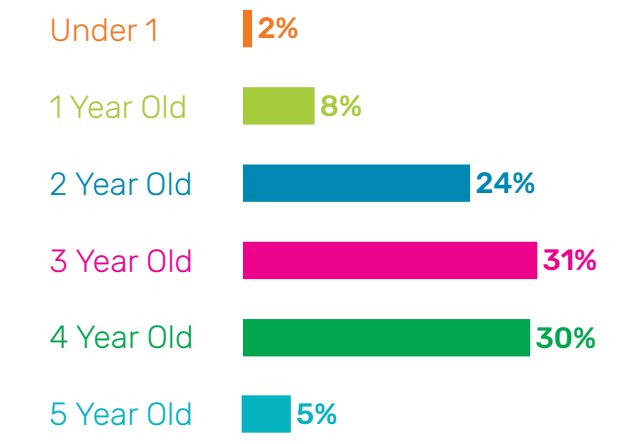


Total Number of Children Served
1,320

Total Number of Families Served
1,233



Age



School Readiness

Our HS/EHS curriculum is designed to foster growth and prepare children for kindergarten through engaging activities, interactive learning experiences, and social encouragement. Through a combination of play, positive interactions, and a carefully crafted curriculum, we provide a dynamic environment for young learners to thrive.

Aligned with the California state standards for kindergarten, our curriculum framework ensures that each child receives a comprehensive educational foundation. To gauge progress effectively, we utilize the Desired Results Developmental Profile, conducting assessments at the beginning, middle, and end of the academic year.

These assessments, coupled with portfolio evaluations, offer a holistic view of each child's abilities across various domains. We assess their approaches to learning, social and emotional development, language and literacy skills, English-language proficiency, as well as cognition and physical development/health.

Armed with this valuable insight, we tailor our lesson plans to meet the unique needs of every child. Whether through individualized attention, small group activities, or large group instruction, we strive to create learning experiences that are not only developmentally appropriate but also engaging.



CSI Head Start's holistic approach to early childhood education ensures that children are not only academically prepared for kindergarten but also equipped with the social, emotional, and physical skills necessary for success in school and life.

Parent Testimonial:

"HS has been a life changer for our family. The parenting skills gained through the various workshops and Head Start programs have equipped our family to break negative cycles passed on by previous generations and have set us on course to begin new greater family and parenting practices for the future our kids and our generations to follow." – Nancy, Head Start Parent



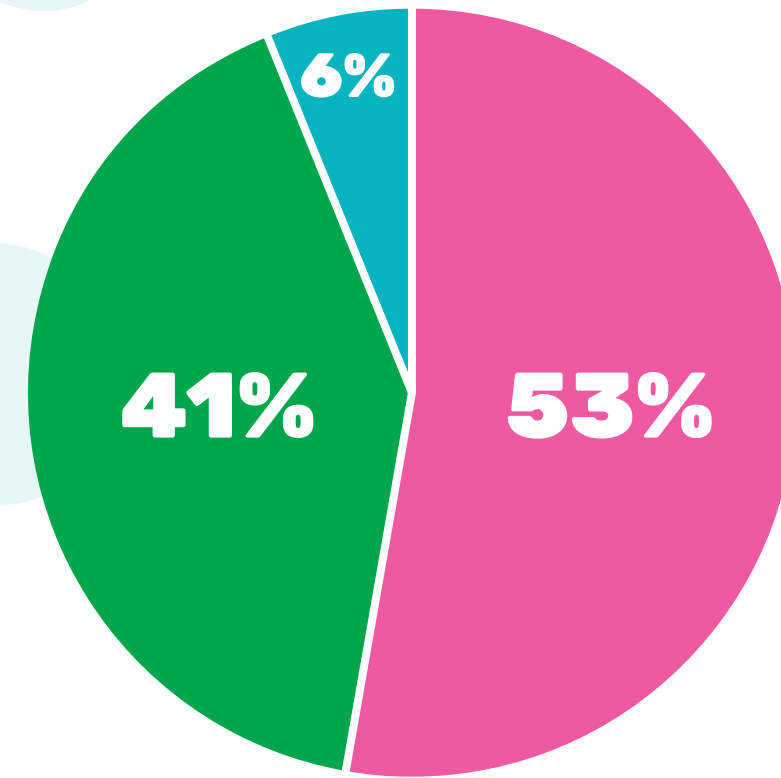
Head Start - Fall	Early Head Start - Fall	Head Start - Winter	Early Head Start - Winter	Head Start - Spring	Early Head Start - Spring
Children Meeting or Exceeding Expectations	Children Meeting or Exceeding Expectations	Children Meeting or Exceeding Expectations	Children Meeting or Exceeding Expectations	Children Meeting or Exceeding Expectations	Children Meeting or Exceeding Expectations
55% Approaches to Learning Development	72% Approaches to Learning Development	66% Approaches to Learning Development	70% Approaches to Learning Development	68% Approaches to Learning Development	68% Approaches to Learning Development
68% Social Emotional Development	65% Social Emotional Development	77% Social Emotional Development	63% Social Emotional Development	81% Social Emotional Development	67% Social Emotional Development
61% Language & Literacy Development	53% Language & Literacy Development	71% Language & Literacy Development	49% Language & Literacy Development	75% Language & Literacy Development	51% Language & Literacy Development
47% English Language Development	N/A English Language Development	56% English Language Development	N/A English Language Development	60% English Language Development	N/A English Language Development
58% Cognition Including Math and Science	40% Cognition Including Math and Science	69% Cognition Including Math and Science	49% Cognition Including Math and Science	75% Cognition Including Math and Science	50% Cognition Including Math and Science
67% Physical Development - Health	62% Physical Development - Health	69% Physical Development - Health	65% Physical Development - Health	73% Physical Development - Health	69% Physical Development - Health

We've Got CLASS!®

Head Start utilizes the **CLASS** (Classroom Assessment Scoring System) observation tool to assess and improve the quality of teacher-child interactions, guide professional development, inform programmatic decisions, ensure accountability, and contribute to research in early childhood education.

CLASS provides a standardized framework for evaluating the quality of teacher-child interactions, ensuring that Head Start programs maintain high standards of instructional excellence and support.

We also use the **Early Childhood Education Environmental Rating Scale** to determine the quality of the centers with 7 being the highest score possible



Percent of Children Ready to Enter Kindergarten Based on 1,320 Children

- Demonstrating Readiness
- Approaching Readiness
- Emerging Readiness

Based on a scale of 1 - 7 with 7 being the highest

CLASS® Based on a scale of 1 - 6 with 6 being the highest

	Average	2023 Low Quality Threshold
Emotional Support	5.78	5
Classroom Organization	5.27	5
Instructional Support	2.59	2.3



Early Childhood Environmental Rating Scale

6.1



Family Child Care Home Environmental Rating Scale

5.75



Infant & Toddler Environmental Rating Scale

6.0



Total Number of Children That Transition to Kindergarten

453



Health Services

The Head Start program emphasizes the importance of good health, integrating best health practices in our day to day learning. Our goal is to ensure each child is up to date on well-child health care requirements, including age-appropriate immunizations. Head Start mandates that all children visit a doctor annually and dentist every six months.



Head Start Review

CSI Head Start/Early Head Start participated in the Focus Area 1 Review conducted by the Office of Head Start in October 2023. The Office of Head Start found all areas were in compliance. The success of our program is due to our qualified, committed, and dedicated staff.

Health Requirements

Health Exams	87%
Dental Exams	87%
Up-to-date Immunization	98%
Children with allergies	15%
45 Days Vision Screening	99%
45 Days Hearing Screening	99%
ASQ - Developmental Screening	100%
ASQ - Social Emotional Screening	100%



Parent Testimonial:

"Thank you so much for your support, I didn't think that with my background I would have the opportunity to do something good for my child. You have been a blessing to our family."

— Martin, Head Start Parent



Child Care Partnerships

CSI Child Care Partnerships are formal agreements with local child care providers to enhance services for low-income working families through comprehensive services; access to full-day, full-year care, while preparing children for school.

CSI HS/EHS licensed Child Care Partners share the same values and commitment to children and families and are committed to ensuring that every child gets a Head Start. Both our private center-based partners and our Family Child Care Home partners comply with all Head Start requirements and demonstrate high quality standards. Services in our partnerships not only benefit children enrolled but also all children serviced with our partners.



Finances

Crystal Stairs, Inc. Head Start/Early Head Start ensures strong financial management practices and great care of our public funding.



Head Start Review

Number of Children Enrolled in Partnerships	345
Number of Partners	39
Number of Additional Children Who Benefitted from Partnership	545



Financial 22/23

Public and Private Revenue Received	
HS/EHS	\$30,290,881.00
CACFP	\$758,253.00
Total Federal Revenue	\$ 31,049,134.00
State Preschool	\$1,515,296.00
CACFP	\$39,016.00
Total State Revenue	\$ 1,554,312.00
Other Revenue	\$134,166.00
Total Other Revenue	\$134,166.00
////////////////////////////////////	
Total Public and Private Revenue	\$32,737,612.00

Financials Continued on the Next Page

Expenditure FY 2022-2023

HS/EHS	\$29,732,524.00
CACFP & State Preschool	\$2,312,565.00
Other	\$134,166.00
Training	\$558,357.00
Total Expenditures	\$32,737,612.00

Proposed Budget BY 2023-2024

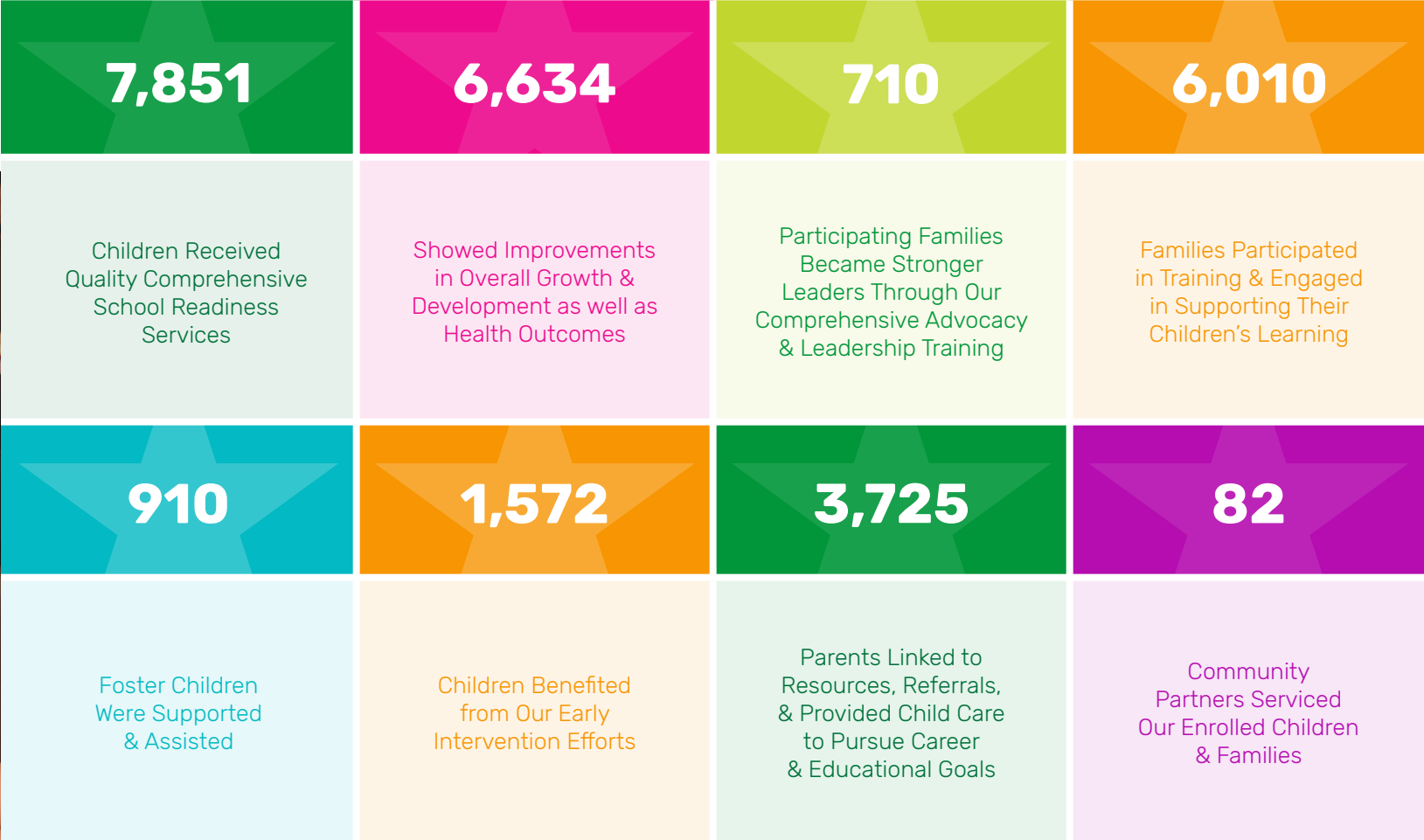
HS/EHS Program Services	\$36,877,542.00
CACFP & State Preschool	\$3,200,934.00
Training	\$332,793.00
Total Proposed Budget	\$40,411,269.00

Participation in Crystal Stairs, Inc.

Crystal Stairs' Board of Directors members are deeply committed to the Head Start Program, ensuring parents have access to an array of invaluable benefits for our children, their families, and the surrounding neighborhoods. These advantages are not only immediate but will also resonate throughout their lifetimes. Over the last 12 years CSI Head Start has created a positive impact in the lives of the children who enrolled in our programs. The impact is particularly important for our CSI children who are Hispanic and African American, dual language learners, children who are homeless or in foster care, those who qualify for free lunch, have a disability, and those whose households are led by a single mother.



12 Years of Crystal Stairs Head Start





Crystal Stairs, Inc.
Head Start/Early Head Start

5110 W. Goldleaf Circle, Suite 150, Los Angeles, CA 90056-1282

Phone: 323.299.8998 / crystalstairs.org